

SAGE Eldercare is a 501(c)(3) nonprofit organization.
Engage SAGE is a publication for SAGE's friends and supporters.

Serving the Person and the Community

2023-2025 STRATEGIC PLAN PRIORITIZES THE
CHANGING NEEDS OF OUR SENIOR RESIDENTS

Dear Friends,

Emerging from the COVID pandemic in 2022 was a time of mission renewal and focus on organizational effectiveness for SAGE. Galina Muller, Director of Finance & Administration, provided extraordinary leadership, analyzing each aspect of SAGE's operations and implementing best practices to shape a nimbler, more cost-effective organization. That work served as the basis of a collaboration between the SAGE Board of Trustees and Management to craft a Strategic Plan for 2023-2025, a plan that would honor both SAGE's roots at its 1954 founding and the needs of today.

Our core services are at the Plan's center: Adult Medical Day Program, HomeCare services, Meals On Wheels, Medicare counseling (SHIP), social work outreach and our Furniture Restoration Workshop. Additionally, the Plan prioritizes the changing needs of senior residents in Summit and the surrounding communities to ensure our services meet their needs. This emphasis will identify new ways to serve and allow us to develop opportunities to partner with other service organizations.

As part of SAGE's path forward, we have promoted Galina Muller to Executive Director. In her 15 years at SAGE, she has led the finance function and numerous key initiatives, adding the day-to-day leadership of SAGE's non-clinical operations to her portfolio over the last year. She is dedicated to SAGE's mission and has demonstrated the leadership and judgement that will greatly benefit SAGE in the years ahead.



***We are grateful for the 439 donations we received in 2022 which directly support SAGE programs. See the complete list at www.sageeldercare.org/donor-recognition.**

SAGE operates under strict regulatory requirements, with licensed healthcare workers, a staff of administrative professionals and a network of dedicated volunteers. We provide superior services to clients in our community, whether they are a client of means or require financial support to meet the cost of care. We are able to deliver our services to all who require them by covering a portion of unreimbursed service costs through donations, grants, government support and the efforts of our incredible volunteers.

We appreciate your interest in and your support for SAGE Eldercare. We welcome everyone to visit us to learn more about the many ways we serve our community as a whole and person to person.

With regards,

Leslie Hardin
SAGE Eldercare Board President

Restoring 40 Years of Dollhouse History in Time for Christmas

BY ANGIE BANZIGER

Restoring family heirlooms is something SAGE's restoration team is known for doing uniquely well. This past December, Diane of Maplewood found out just how well.

"The dollhouse was built in 1980 by my grandfather, Harry Davis. He was a retired chemist at Kodak and in his retirement, loved to do stained-glass and woodworking projects," Davis explained. "I remember playing with it all the time when I was a kid...I just loved it."

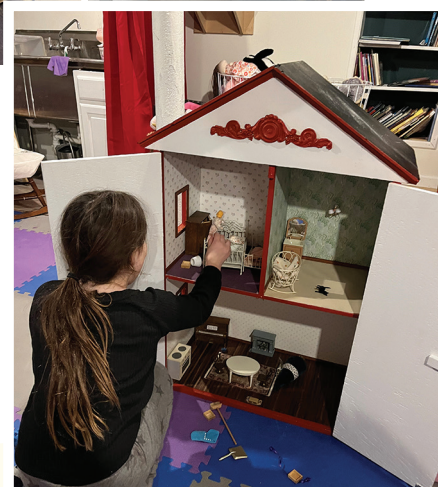
Someone on a local Facebook group recommended the SAGE Restoration Workshop. In no time at all, she was working with Bob McNally, manager of the workshop, who brought the dollhouse to

If you have a furniture repair project, contact the SAGE Restoration Workshop at 908-598-5531.

life again with new wallpaper, flooring, even lights—in time for Davis and her husband to give it to their girls for Christmas. "I love that my daughters now have a beautiful dollhouse built by their great grandfather and restored by the amazing Bob and the team at SAGE," she raved.



Diane's original dollhouse built by her grandfather is still a family heirloom to cherish.



A Special Thanks...

...to **Arch Group Foundation** for their financial support. With it we are helping healthy people 60+, active caregivers, concerned friends and family and older adults needing direct care lead independent, active lives.



The Arch Group Foundation (AGF) facilitates Arch Capital Group Ltd.'s commitment to supporting stronger, more resilient communities. AGF directs funds to organizations that make a meaningful impact in one or more of Arch's giving priorities—accessible safe housing, academic and career success, environmental resilience, and healthy, thriving societies—as well as those that align with the company's commitment to diversity and inclusion. Arch Capital Group Ltd. is part of the S&P 500 Index and provides insurance, reinsurance and mortgage insurance on a worldwide basis through its wholly owned subsidiaries.



SAGE is making an impact!



HOME CARE
Our home health aides helped
63 clients with
33,600 hours of service

ADULT MEDICAL DAY PROGRAM

Our medical staff cared for
69 clients for a total of
5,655 days of care



MEALS ON WHEELS

Our 100 volunteers visited
250 clients bringing
28,875 meals



GROCERY SHOPPING

Our volunteer shoppers served
32 clients with
140 trips



SOCIAL WORK

Our social workers helped over
500 clients



FROM GALINA MULLER, EXECUTIVE DIRECTOR

Our Mission is More Relevant Than Ever

This year brings much hope to all of us. By recent counts, COVID-19 rates are dropping and life is returning to some semblance of normalcy. Many seniors, however, remain hesitant of daily activities outside the home, causing further isolation when most should be enjoying their golden years.

SAGE is also experiencing a return to normalcy. Onsite events, exercise classes and informational seminars are seeing active participation, SAGE representatives are attending public events and we are planning a Fall Gala.

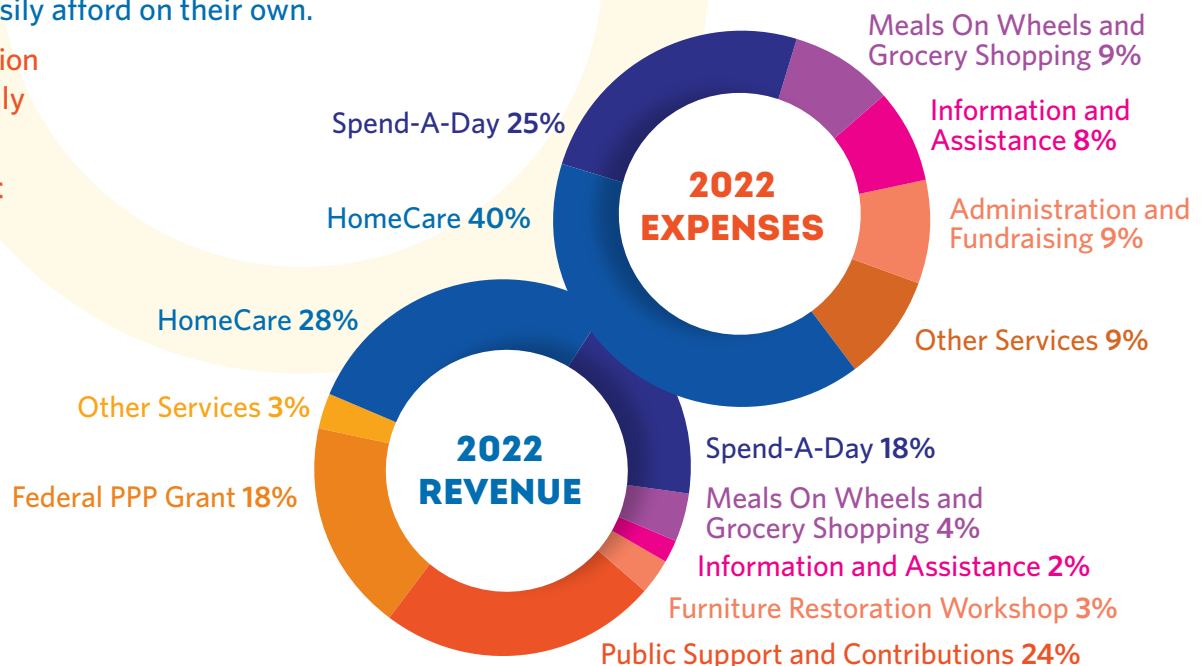
Last year our census grew for all our clinical programs. We reinstated community outreach efforts and hosted a friendraiser at the Summit Elks Lodge—made possible by the perseverance of our staff and dedicated team of volunteers. Our mission remains more relevant than ever. Our clinical and support services allow seniors to age at home while giving family or caregivers the support and respite they deserve.

2022 Financial Overview

Program revenues remained below pre-pandemic levels in 2022. Your financial support allows us to provide services that the elderly cannot easily afford on their own.

We offer a variety of donation opportunities, from monthly to quarterly or annually.

Scan the code below, visit www.sageeldercare.org or call 908-598-5504 to learn more.



What others are saying...

"I called SAGE Meals on Wheels as I was not eating after a hospital stay. When the first meal came, I was almost in tears. My recovery has been long and I appreciate each meal and the wonderful people who deliver them. What a difference your service has made in my life. Thank you."

—Mary, age 69

Your support makes this achievable. Client insurance only covers 70-80% of the costs, so every dollar helps bridge this gap and mitigate a deficit while we face the challenges of rising costs, increasing regulations and flat reimbursements. Because all our programs serve those who do not have significant means, many in our community rely on SAGE—and we depend on public support.

We are so grateful to our friends, donors and volunteers. **Would you consider sending a donation in the enclosed envelope?** Your generous gift will ensure older adults receive programs and services to remain where they wish to live most—in their own homes.



290 Broad Street, Summit, NJ 07901

Non-Profit Org.
US Postage
PAID
Union, NJ
Permit No. 451

Did you know? Donations may also be made in the following forms:

- Qualified charitable donation from your IRA
- Grant from a Donor Advised Fund
- Gift of appreciated securities
- Legacy in your estate plan

Call 908-598-5504 to learn more!

2023 Executive Committee

Leslie Hardin, *President*
Prospect Capital Advisors

Cheryl LaBelle, *Co-Vice President*
Community Representative

Robert P. Lecky Jr., *Co-Vice President & Treasurer*
Community Representative

2023 Board of Trustees

Emilie Boggis,
Beacon Unitarian Universalist Church

Ines Cohron, Total Home Cleaning

Christopher Cotter, Cotter Strategies, LLC

Michael J. Foncannon,
PNC Wealth Management

Sue Luehs, Community Representative

Adam Psichos, Glenmede

Robyn Roberts, Robyn Roberts, CPA

Claire E. Toth,
Peapack Private Wealth Management

Michael Ventura,
Ventura, Miesowicz, & Keough, P.C.

Upcoming Events

APR
5

SAGE DISCUSSION

'The Importance of Research in Alzheimer's Disease'. Wednesday, April 5, 1pm-2:30pm, at SAGE Eldercare.

APR
20

VOLUNTEER APPRECIATION LUNCHEON

Thursday, April 20, 12:30pm-3:30pm, Vintage Tavern (formerly Chimney Rock Inn), 342 Valley Road, Gillette. RSVP: Jean Finsen, jfinsen@sageeldercare.org or 908-598-5504.



TAI CHI WITH JUDITH REW

Tuesdays, 11am-12pm, at SAGE Eldercare.

CHAIR YOGA WITH JOSE RIVERA BENITEZ

Thursdays, 11am-12pm, at SAGE Eldercare.

... and check out our full calendar at www.sageeldercare.org/calendar.